

Roller Brake Tester

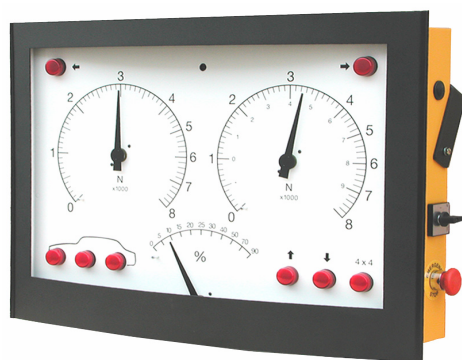
art in automotive test equipment! **art** in automotive test equipment!
art in automotive test equipment! **art** in automotive test equipment!

Analogue display BD2060

The COMAR® BD2060 is an analogue display with traditional dials. It comprises the latest microprocessor technology. It is designed in such a way that all electronics are inside the read out unit. Therefore, no separate relay box necessary!

Standard features are:

- ❑ Brake force indication left & right up to 8 kN.
- ❑ Brake force difference left & right.
- ❑ Full automatic test sequence.
- ❑ Microprocessor controlled.
- ❑ 4x4 reversible roller kit included.
- ❑ Wheel lock indication lamps left & right.
- ❑ Rolling resistance & ovality measurement.
- ❑ Brake efficiency calculation for service- and parking brake after manual weight input.
- ❑ Automatic brake efficiency calculation for service- and parking brake when optional weighing system is integrated.
- ❑ Memory for storage of test results for front-, rear- and parking brake with indicators.
- ❑ Infra red remote control for operation of all functions of the roller brake tester.
- ❑ Easy Exit® drive out of rollers included.
- ❑ Wall bracket included.



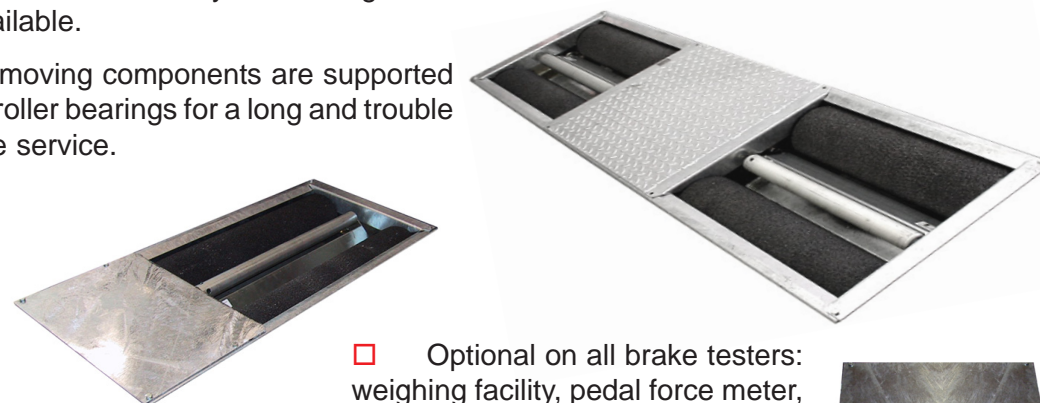
67x50x16 cm

- ❑ BD2060 options: pedestal, printer drawer, pivoting wall bracket, inkjet colour printer, matrix printer.

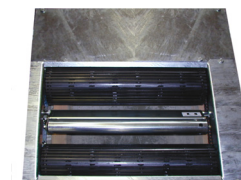
Roller brake testers

The COMAR® roller brake tester analyses the conditions of the brakes of each individual wheel on a vehicle for both the service- and the parking brake. Both the brake forces as well as the difference left/right of an axle are clearly displayed. Naturally, important data such as ovality and rolling resistance can be determined. Various models are available.

All moving components are supported by roller bearings for a long and trouble free service.



- ❑ Optional on all brake testers: weighing facility, pedal force meter, steel rollers, cover plates.



❑ Specifications		RT2001	RT2002	RT2012	RT900
Measuring range	N	6000	8000	8000	6000
Axle load	ton	3	4	4	2,5
Roller speed	km/h	2,5	5	5	2,6
Roller dimensions	m m	206 x 700	206 x 700	206 x 900	180 x 600
Track	m m	700-2200	700-2200	Variable	Variable
Construction	chassis	Single	Single	Dual	Dual
Motors	kW	2 x 2,2	2 x 5,5	2 x 5,5	2 x 2,2
Power supply	V/Hz	3-ph. 400 V / 50Hz	3-ph. 400 V / 50Hz	3-ph. 400 V / 50Hz	3-ph. 400 V / 50Hz
Dimensions	c m	234 x 66 x 30	234 x 66 x 30	144 x 66 x 30 (one side)	88 x 78 x 21,5 (one side)
Chassis finish		Hot dip zinc	Hot dip zinc	Hot dip zinc	Hot dip zinc

Technical specifications are subject to change without notice. COMAR is a registered trademark.

COMAR®
 a product of Altus-Escon-Company BV

Drachmeweg 26
 NL-2153PA Nieuw Vennepe
 Netherlands

www.comar-test.com
 info@comar-test.com

Tel: +31 (0)88 25 83 700
 Fax: +31 (0)88 25 83 790

